



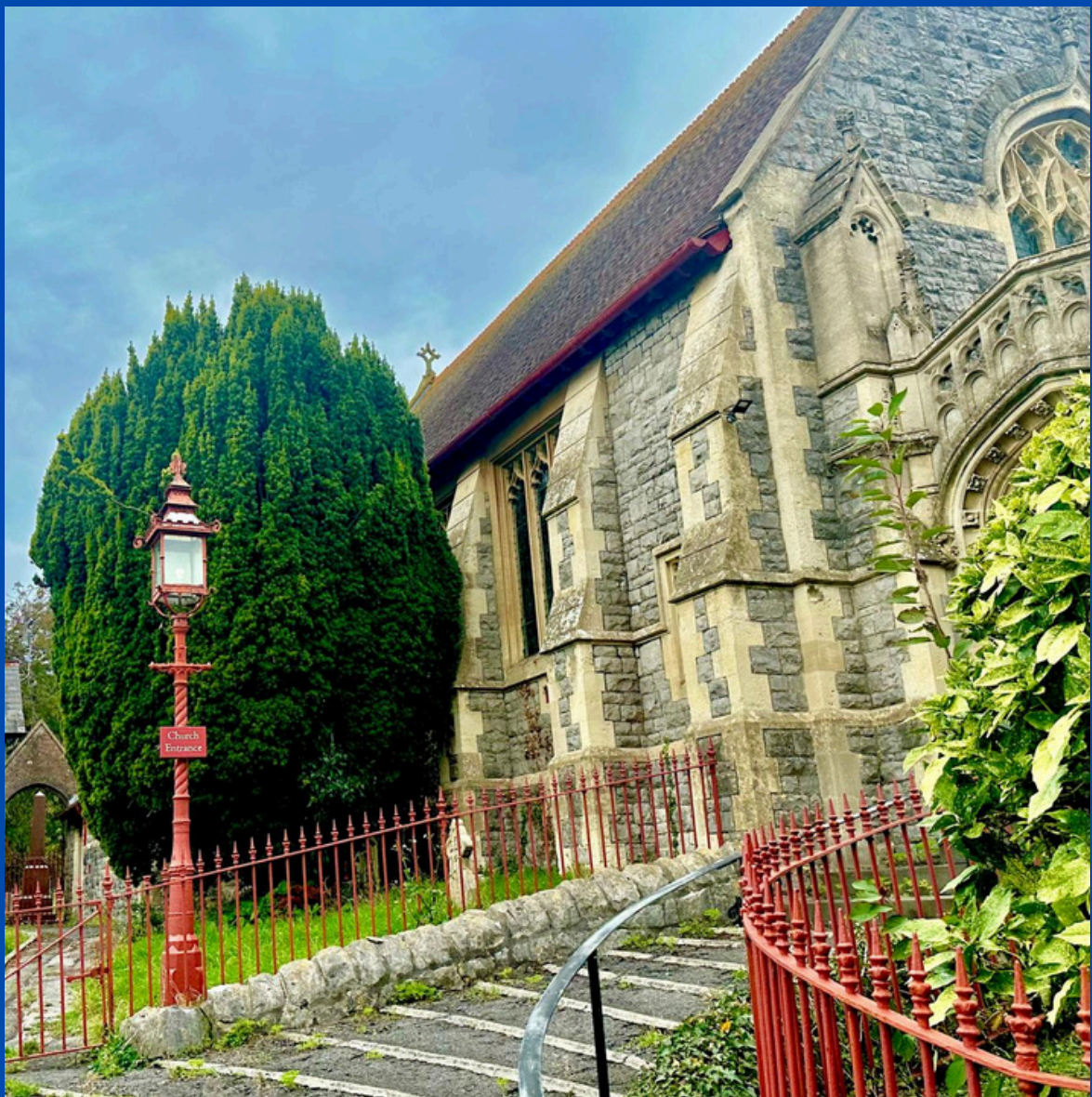
# CHURCHILL & LANGFORD

## LOCAL NEWS

Churchill Parish Council serving the community  
of Churchill and Langford villages

[www.churchillpc.org.uk](http://www.churchillpc.org.uk)

APRIL 2026





Welcome to our newsletter for the community of Churchill and Langford villages. Full Council meetings are held on the second Monday of each month at the Community Hall, Ladymead Lane, Churchill and you are welcome to attend these meetings.  
Parish Clerk Sally Diaz

### Churchill and Langford Parish Council – Meeting Summary

A resident has been signposted to the Good Neighbour Scheme and will be attending the 'Annual Parish Get Together' to share how you can get involved.

Another resident has asked for support to improve cycle links through Churchill and Langford. This work is being explored.

Colne Residential have kindly donated a defibrillator to the Parish. It is now installed to the left of the front door at the Reading Rooms. As the village continues to grow, this is a valuable and much-needed addition for Churchill.

The noticeboard at the lights has now been relocated to the recreation area. It will be used to share key updates and information with residents. Keep an eye out for what's coming next.

The new logo for Winscombe and Churchill Football Club has been installed at the Community Club, with the original sign carefully repositioned. A great blend of old and new on display.





# Annual Get Together

20<sup>th</sup> April 2026

Starting At  
7.00pm

**Churchill Memorial Hall.**



**More Information**  
<https://churchillpc.org.uk>



**More Information**



Come and join us for the Annual Parish Get Together. This year, we are celebrating volunteers. Share your ideas and learn about opportunities in the area.

# Sensible Parking Matters

Parking matters more than you think

Please keep roads and access points clear for:

- Emergency services

Fire engines and ambulances need space to get through quickly

Every second counts

- Bin collections

Refuse vehicles need clear access to collect your bins

Blocked roads can mean missed collections

Before you park, ask yourself:

- Can a fire engine get through here?
- Am I blocking access to homes or junctions?
- Will this stop bins from being collected?

A small change in where you park can make a big difference to your neighbours and your community.



## ALL Garden Construction/Maintenance and Handyman Services

- PATIOS, WOOD STRUCTURES, FENCES, WALLING
- FULLY INSURED
- OVER 30 YEARS PROFESSIONAL EXPERIENCE
- EMAIL: [gardencare4u@live.co.uk](mailto:gardencare4u@live.co.uk)
- TEL: MARK OR LEE 07542 767118



## Update from Tessa Munt, MP for Churchill and Langford

Thank you - many of you wrote to me about banning social media for the under 16s. This is beyond party politics. Government must do far more to hold social media companies to account for protecting our children and young people, whose health and welfare should come before these giants' mega-profits.

Here in Somerset, I joined a South West Ambulance Service crew on shift. It was humbling to spend time with this dedicated team and I learned a lot about their jobs.

The Health Secretary praised our Ambulance Service in Parliament for its improved response times in December.

Whilst at A&E, local Paramedic Science graduates explained how difficult it was to find a job. Only 8 of 120 graduates from their year at Uni have found work in their chosen field. Back in Westminster, I questioned the Health Secretary about this problem, which he acknowledged.

In Parliament, I've asked the Cancer Minister about collecting data so we understand cancer treatment waiting times better - often radiotherapy is followed by surgery or by a course of drugs, but only the first treatment target is measured which distorts the statistics for response times.

I voiced my dismay at yet another Government apology for WASPI women as Ministers decided not to pay a penny in compensation for the mistreatment of this group. At £1,000 to £2,950 for each woman affected, it's hardly a high cost for justice.

I've also asked about:

- \* building on flood plains and the risk to future insurance cover for homes
- \* Parole Board hearings, an alleged leak of Court reporting data, planned reductions in jury trials
- \* freehold and leasehold changes for residents in care-led retirement living apartments
- \* MPs' votes on the Gibraltar Treaty
- \* treatment for those with severe and very severe ME
- \* releasing the records relating to Andrew Mountbatten-Windsor's appointment as a UK Trade Envoy
- \* ceasing Bereavement Support Payments after 18 months for widowed parents, especially those with very young children

If you have a concern or question, please contact me or come to a 'surgery'. The most local venues are below, but my office will give you the full list:

Friday 3<sup>rd</sup> April from 09:30 to 10:30 at The Market Kitchen Café, Churchill

Saturday 4<sup>th</sup> April from 11:30 to 12:30 at The Lamb Inn, Axbridge

Saturday 11<sup>th</sup> April from 14:30 to 15:30 at The Coffee Bank, Winscombe

Friday 17<sup>th</sup> April from 18:00 to 19:00 at The Bell Inn, Banwell

No appointment is necessary - it's first come, first served. If you can't come to meet me, I'll come to see you.

Thank you.

Tessa

You can contact me:

Call: 01934 440639 (answerphone outside office hours)

Email: [tessa.munt.mp@parliament.uk](mailto:tessa.munt.mp@parliament.uk)

Post: Tessa Munt Freepost (you won't need a stamp!)

To keep updated on my work as your MP, find me on Facebook, Instagram, Bluesky and LinkedIn.

You can also contact your North Somerset Councillor, Patrick Keating:

Call: 07584 674740

Email: [patrick.keating@n-somerset.gov.uk](mailto:patrick.keating@n-somerset.gov.uk)



**Sun April 26<sup>th</sup> 3pm**

All Saints Church, Wroughton

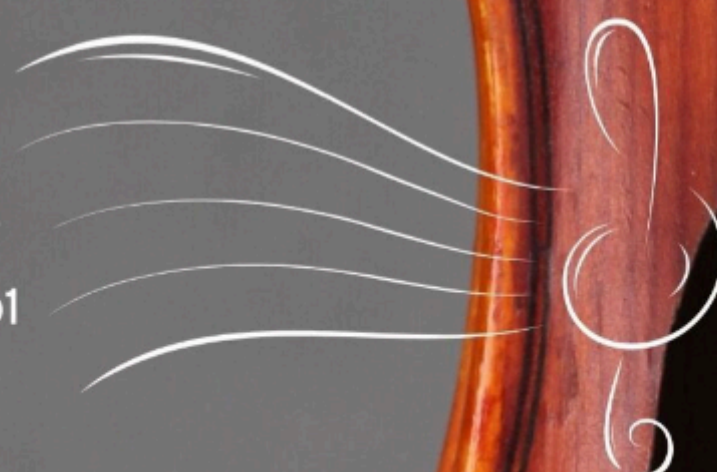
# London Mozart Chamber Players

Ruth Rogers, violin  
Antonia Keel, violin  
Judith Busbridge, viola  
Leo Popplewell 'cello

**Haydn** Sunrise Quartet  
**Ravel** String Quartet in F major  
**Tchaikovsky** String Quartet No1

**Tickets:** £15.50; £19.50; U 18's £1  
**From:** Ticketsource; holly@churchillmusic.org.uk;  
or 07442 672805 or on the door  
**More info:** 01934 853518

churchillmusic.org.uk Registered UK charity No 1121866





## Wrighton Vale Rotary Club

### The Rotary Frog Race generates over £2000 for local charities.

Eighty people enjoyed a very lively evening at Shipham Hall. Some people got very excited as the evening moved towards the final.

The Frogs are ply cutouts on a string. They are coaxed along by a "Jockey". The event is run in horse-racing style with a Tote. There are five races and then a final of the winners. It is a lot more difficult than it looks!

Proceedings were helped along by delicious Pig Roast baps provided at cost by Murray Catering and lubrication at cost by Thatchers Cider.

The Auctioneer, John Thatcher, in his usual flamboyant style, persuaded the punters to bid for their favourites. John Alvis kept order as Master of Ceremonies. Lynda Pearce, as Tote Manager, ensured financial probity.

The Vincent family cleaned up! Roger Vincent, the Winning Owner, and his Daughter Catherine, the winning Jockey, were each presented with a bottle of Aldwick Jubilate Wine, kindly donated by the Aldwick Estate.



The winning owner, Roger Vincent, and Winning Jockey Catherine Hancock with President Nigel Oakley



Jockeys in action.

**Next Breakfast Meeting: Critical Minerals and Greenland** will be fascinating- it is on Wednesday 1<sup>st</sup> April at the Mendip Activity Centre, BS25 5BQ at 0800, finish at 0900. No booking required. Come a bit earlier, have a chat and a bacon bap. Information from Angie Biggs 07790 400718

# GOOD NEIGHBOUR SCHEME

**We need a VOLUNTEER like you!  
Can you spare an hour?**

**Can you help support someone  
by volunteering your time  
and skills?**

Skills like cutting the grass, walking a dog, reading a book, putting up pictures, painting a skirting board...etc.

Sign up to Voluntary Action North Somerset's **GOOD NEIGHBOUR SCHEME** and support someone in your community to maintain a good quality of life, remain independent and happy in their own homes.



Find out more by contacting Tracy on:



07458073262



[tracy.edwardsbrown@vansmail.org.uk](mailto:tracy.edwardsbrown@vansmail.org.uk)



**COMMUNITY  
FUND**



# THE GARDEN ROOM COUNSELLING

WESTON-SUPER-MARE



I make people laugh.

That might sound like a strange way to introduce counselling, but humour is one of the ways we humans connect, find perspective, and make even the hardest issues easier to face.

I'm an integrative counsellor, which means I draw upon a blend of therapeutic approaches rather than sticking to one fixed method.

Research shows it isn't the counselling modality that creates change, but the relationship between client and therapist. That's why finding the right counsellor for YOU matters.

In addition to being an integrative counsellor I specialise in unexpected DNA test results and trauma held in the body.



**BECKY WALSH**

Intuitive Integrative  
Counsellor

[www.beckywalsh.com](http://www.beckywalsh.com) [www.mydnadiscovery.com](http://www.mydnadiscovery.com)

Face-to-face in Weston-super-Mare or online via Zoom

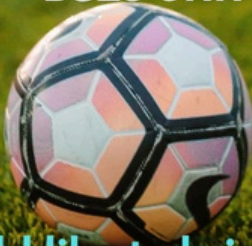
# Open training sessions



*Ages 5 & 6 (Reception & Year 1)*

*Thursday 26<sup>th</sup> March & Thursday  
2<sup>nd</sup> April 5:45 - 6:45*

*Churchill Recreation Ground  
BS25 5NH*



**If you would like to bring your child along please contact Rob Stead on 07706815695**

**Recycling centre booking system now in place at Weston-super-Mare**

**Book your next visit**

[www.n-somerset.gov.uk/recyclingcentres](http://www.n-somerset.gov.uk/recyclingcentres)



or do it on the app

## WHAT'S ON IN CHURCHILL AND LANGFORD?

**Sport. Music. Art. Clubs. Community.**  
*Everything happening locally. In one place.*



From weekend matches to evening rehearsals.  
From creative groups to community lunches.  
Stay connected to village life.

Find it all in the Village Diary.



**SCAN TO VIEW  
THE VILLAGE DIARY**



[www.churchillpc.org.uk](http://www.churchillpc.org.uk)



Organise a club or event? Submit your dates to [comms@churchillpc.org.uk](mailto:comms@churchillpc.org.uk)

# **((!)) Bus service changes**

**5 April 2026**

**A number of bus services are changing from 5 April 2026.**



For the latest updates, please **scan the QR code**, or visit **[travelWEST.info/ServiceChanges](https://travelWEST.info/ServiceChanges)**



Explore gardening topics with John Simmons

Whether its flowers or fruit and veg that are your passion (in my case both), April is definitely a busy month in the garden. However, don't get lulled into a false sense of security; it may be a month where light levels and temperatures are on the rise, but it can also be cold, and frosts are far from rare. Be prepared to bring tender plants indoors, or at least put them under some horticultural fleece, if low temperatures are forecast.

You will have some gaps in your flowers beds I'm sure, so direct sow hardy annuals like love-in-a-mist and pot marigolds, as well as native wildflowers, to fill them. Kids love sunflowers, and these can also be direct sown now, in a sunny area. More tender annuals, such as zinnias, cosmos and rudbeckias can be sown in a seed tray somewhere warm. They will give you colour as other annuals die off in late summer.

As the new shoots of hostas, delphiniums, lupins and other vulnerable plants emerge, protect them from slugs and snails. Various materials are said to deter them, but I have yet to find anything that unfailingly works, though the product Strulch does seem to be pretty good. It's not cheap, but a bag does go a reasonably long way. Mature clumps of hostas, asters and daylilies can be divided and replanted now.

One plant that looks much more tender than it is, is the pineapple lily (Eucomis). Bulbs can be planted now, in pots, for exotic-looking summer flowers. They multiply pretty rapidly in my experience too.

Continue deadheading spring bulbs. When the top growth has died off you can then lift and store them somewhere cool, dark and dry, ready for replanting in the ground later in the year. In the veg garden you can plant the second-early and maincrop potatoes that you've hopefully been chitting for the past couple of months.

Hopefully your broad beans won't be covered in blackfly, but if they are then either pinch out growing tips or, if you can bring yourself to do it, rub them gently with your fingertips to squash the aphids. Spraying with a soap-based solution will also kill them off.

Don't plant out any outdoor tomatoes or chillies yet. Delay planting until May, or possibly even early June, when ALL chance of frost has passed. Courgettes and squash are even less tender, and seeds should be sown this month, with a view to planting out in late May or June.

Beetroot, carrots, salads and the like can be sown direct into the ground, but don't sow too much. Sow little and often for a succession of crops through the year.

# CHURCHILL AND LANGFORD VILLAGE DIARY!



Planning an event in Churchill or Langford? Make sure your event doesn't clash. Whether it's a music event, flower show, village get-together or a local club meeting, make sure your date doesn't clash with other key activities by checking the Village Diary and adding your event to it!



The Village Diary, maintained by the Communications Officer of Churchill Parish Council, is a central calendar designed to help local groups and residents coordinate activities throughout the year. It's a simple but powerful way to avoid overlapping events, maximise attendance, and support each other's efforts in building a vibrant, well-connected community.

To ensure your event gets the attention it deserves, and to help others do the same, the form with the details of your event as early as possible. The more we all use the Village Diary, the more effective it becomes.

Let's work together to keep Churchill's community life thriving, one well-planned event at a time!

<https://churchillpc.org.uk/whats-on/>

# We have allotments available NOW!

Allotments plots available at Churchill

We have several plots available at our Allotment fields on Pudding Pie Lane. The plots are available for Churchill/Langford residents and those from our surrounding villages. If you are interested in taking over a plot, contact me on 07399 523961 or on [clerk@churchillpc.org.uk](mailto:clerk@churchillpc.org.uk)



Langford Vet Practice 

Your local vets for all your pets



- Vet care for cats, dogs, rabbits and other small pets including most exotics.
- Emergencies accepted 24/7, we provide our own Out-of-Hours emergency care
- Multi-discipline referral hospital just next door for advanced or emergency referral cases

01934 852 422

[www.langfordvets.co.uk](http://www.langfordvets.co.uk)  
Langford Vets,  
Langford, BS40 5DU



 University of  
BRISTOL

 RCVS  
ACCREDITED  
PRACTICE

What3Words:  
[rigid.joints.enroach](https://www.what3words.com/rigid.joints.enroach)

Register  
your  
pet:



**TECH LEARNING & SUPPORT SESSIONS**

**EVERYONE IS INVITED TO LEARN SOMETHING NEW OR OVERCOME A 'TECHY KNOW-HOW NIGGLE'**

FROM CHURCHILL PARISH COUNCIL AND OUR WONDERFUL VOLUNTEERS

**MASTER YOUR COMPUTER, SMART PHONE, TABLET OR OTHER TECHNOLOGY FOR FREE**

JOIN OUR NEWSLETTER



For More Information and to book training help email:

[clerk@churchillpc.org.uk](mailto:clerk@churchillpc.org.uk)

Churchill, Langford and surrounding area

# UP COMING EVENTS

---

## COUNCIL MEETING

Full Council meetings are held on the second Monday of each month at the Community Hall, Ladymead Lane, Churchill.

---

## SING FOR FUN

Every Friday 1.30 to 2.30

St Marys Church Langford

For everyone who simply wants to feel better through singing.

More info Jan Murray

[info@churchillmusic.org.uk](mailto:info@churchillmusic.org.uk)

## EXPLORE TRINITY SINGERS

Unlock the benefits of singing for your health and well-being!

Trinity Singers, based in Churchill, North Somerset, welcomes you to: Elevate musical standards with a diverse repertoire, Perform concerts blending Sacred and Secular music, and connect with church music at services and events.

Discover the joy of singing at

<https://www.trinitysingers.co.uk/>

**Monday April 20th**

**Winscombe District u3a talk by Local**

**Astronomer, Jo Richardson,**

**"In the Night Sky"**

**2.00 for 2.30pm. Winscombe Community Centre, BS21 1JA.**

**Visitors very welcome £3.**

## CHURCHILL 2000 LADIES GROUP

Join a small group of about 14 members called the Churchill 2000 formed after the closure of the Churchill W.I. in 2000

Meeting 11 times a year at 7.30pm in the Reading Room opposite the Methodist church on the 3rd Wednesday of the month. Enjoy a speaker, a meal out, visit a garden or have in house entertainment. Open to new members to join a very relaxed group who enjoy an evening together along with a cup of tea and biscuits.

Email [katieandshelagh@btinternet.com](mailto:katieandshelagh@btinternet.com)

## Churchill and Langford Minibus garden trips

Sunday 19 April 2026

Rose Cottage, East Harptree

Minibus £4, Garden entry £5.50

An organically garden planted to encourage wildlife. This is a 'by arrangement' visit, so we'll have the garden, and garden owner, on hand to chat to, and to provide us with tea and cake!

Sunday 17 May 2026

Court House, East Quantoxhead

Minibus £10, Garden entry £7

These gardens are in a wonderful setting on the coast below the Quantock Hills. Sir Walter and Lady Luttrell developed them after settling here in the 1950s. Tea and cake will be served in the nearby village hall.

For bookings, please email or call;

[john.simmons3462@gmail.com](mailto:john.simmons3462@gmail.com) 07855-944049



# The Minibus Society

The Churchill and Langford Minibus Society is now running a scheme to assist people in getting to their hospital appointments.

This scheme aims to connect volunteer drivers from the Churchill and Langford community with patients to provide convenient transport to the region's medical centres.

The service will be provided using local drivers' personal vehicles, or, alternatively, a community minibus.

All drivers will be DBS cleared, and, as part of the process, all drivers will be enrolled as a member of the minibus society.

The costs for hospital transport:

BRISTOL ROYAL INFIRMARY £20

SOUTHMEAD HOSPITAL £20

BATH Royal United Hospital £25

CONGRESBURY £10

YATTON £10

WESTON HOSPITAL £10

WINSCOMBE £10

WRINGTON £10

CHURCHILL SURGERY £10

For other journeys, not specified, the donation will be agreed before the trip by the organiser.

If you need help ring Trevor on 01934 852589 or 07836600019

The Churchill and Langford Minibus Society also runs two minibuses and operates a schedule of trips every month to shops in Wells, Nailsea, Clevedon, Worle and Weston. In addition, it also provides transport for members to their healthcare appointments and subject to availability runs non scheduled trips for its members. In the past, these have included Churchill Music, Theatres, Cinema, pub lunches, trips to the coast and social events etc. To see the current schedule of trips please visit [www.churchillpc.org.uk/local-services/mutual-aid-minibus-society](http://www.churchillpc.org.uk/local-services/mutual-aid-minibus-society).

To become a Society member of the Community transport scheme please contact one of the organisers listed on the schedule of trips who will explain about the trips and how to enroll as a member. The Society is always looking to recruit new organisers and drivers so if you have some spare time then we would love to hear from you. The Chairman's details are on the journey schedule. The Society also provides the opportunity to make new friends and help you reduce your carbon footprint.

# Churchill & Langford Minibus



## APRIL



Monday	Tuesday	Wednesday	Thursday	Sunday	
<p><b>Our area covers Churchill, Langford, Burrington, Shipham, Winscombe, Sandford and Banwell. Membership is free and we ask for a small donation for each journey.</b></p>		<p><b>1<sup>st</sup></b> <b><u>Pm</u></b>  <b>Worle*</b>  <b><u>Jennie</u></b></p>	<p><b>2<sup>nd</sup></b> <b><u>AM</u></b>  <b>Yatton + Churchill Community Lunches</b> <b><u>Angela</u></b></p>	<p>If you are interested in any of these trips <b>please phone the <u>organiser</u></b>, whose names &amp; numbers are shown below.</p> <p>They will let you know if seats are available. We will pick you up close to where you live.</p> <p>The Society is grateful for the support of Churchill, Shipham, Winscombe and Sandford, Burrington and Banwell Parish Councils.</p> <p><b>* <u>Can also pick up in the Banwell Area</u></b></p>	
<p><b>6<sup>th</sup></b> <b><u>Am</u></b>  <b>Bank Holiday</b>  <b>Flowerdown*</b>  <b><u>Maggie</u></b></p>	<p><b>7<sup>th</sup></b> <b><u>Am</u></b>  <b>Weston*</b> <b><u>Mavis</u></b>  <b><u>Pm</u></b> <b>Cheddar Garden Ctr.</b> <b><u>Jennie</u></b></p>	<p><b>8<sup>th</sup></b> <b><u>Am</u></b>  <b>Nailsea</b>  <b><u>Jennie</u></b></p>	<p><b>9<sup>th</sup></b> <b><u>Am</u></b>  <b>Worle + Churchill Community Lunches</b> <b><u>Angela</u></b></p>		
<p><b>13<sup>th</sup></b> <b><u>Am</u></b>  <b>Clarks Village*</b>  <b><u>Ann</u></b></p>	<p><b>14<sup>th</sup></b> <b><u>Pm</u></b>  <b>Weston*</b>  <b><u>Linda</u></b></p>	<p><b>15<sup>th</sup></b> <b><u>Am</u></b>  <b>Wells</b>  <b><u>Linda</u></b></p>	<p><b>16<sup>th</sup></b> <b><u>Am</u></b>  <b>Yatton + Churchill Community Lunches</b> <b><u>Angela</u></b></p>		<p><b>19<sup>th</sup></b> <b><u>Am</u></b>  <b>Rose Cottage Garden Visit</b>  <b><u>John</u></b></p>
<p><b>20<sup>th</sup></b> <b><u>Am</u></b>  <b>Bath</b>  <b><u>Sharon</u></b></p>	<p><b>21<sup>st</sup></b> <b><u>Am</u></b>  <b>Worle*</b>  <b><u>Kim</u></b></p>	<p><b>22<sup>nd</sup></b> <b><u>Am</u></b>  <b>Wells*</b>  <b><u>Ann</u></b></p>	<p><b>23<sup>rd</sup></b> <b><u>Am</u></b>  <b>Winscombe + Churchill Community Lunches</b> <b><u>Angela</u></b></p>		<p><b><u>Maggie 07516 172683,</u></b> <b><u>Angela 01934 707115,</u></b> <b><u>Mavis 07739 608691</u></b> <b><u>Kim 07880 254722,</u></b> <b><u>Jennie 01934 843758,</u></b> <b><u>Ann 01934 822441,</u></b> <b><u>John 07855 944049,</u></b> <b><u>Sharon 07981 064586,</u></b> <b><u>Linda 01934 853755</u></b> <b><u>07871 478229,</u></b>  <b>For any queries please ring Trevor on <u>01934 852589</u></b></p>
<p><b>27<sup>th</sup></b> <b><u>Pm</u></b>  <b>Flowerdown*</b>  <b><u>Ann</u></b></p>	<p><b>28<sup>th</sup></b> <b><u>Pm</u></b>  <b>Weston*</b>  <b><u>Linda</u></b></p>		<p><b>30<sup>th</sup></b> <b><u>Pm</u></b>  <b>Churchill Community Lunches</b>  <b><u>Angela</u></b></p>		

# Noticeboards



Churchill Parish Council updates six noticeboards for the community of Churchill and Langford. Residents can advertise an event on the notice board but not regular group or a business.

If you would like your posters displayed in the noticeboards, please send physical copies to:

The Parish Clerk 17 Sealey Close, Draycott, Cheddar, Somerset, BS27 3UA

Please note, that we cannot print posters for the noticeboards on your behalf.

## Do you own a local business?

Churchill & Langford Parish Council Newsletter is making advertising space available for local businesses to promote their wares and services.

Businesses can buy a spot in this newsletter to advertise. Prices will be £60 for 12 months, and £35 for six months. The advertisement can consist of one line, the name of the business, the type of business, and contact details.

These advertising spaces will be aimed at businesses in and around the local area of Churchill & Langford.

If you are interested in advertising with us, or if you would simply like more information, please contact our Clerk, Sally Diaz, on [clerk@churchillpc.org.uk](mailto:clerk@churchillpc.org.uk) or on 07399 523 961

Got a local event to share?

We love to know what's on and spread the word. Please send information about your event to Becky - [comms@churchillpc.org.uk](mailto:comms@churchillpc.org.uk)



## Contact us

If you have any questions or comments, you can get in touch with us by emailing [clerk@churchillpc.org.uk](mailto:clerk@churchillpc.org.uk)

You can find us on Facebook

[www.facebook.com/churchillparishcouncil](https://www.facebook.com/churchillparishcouncil)

Visit [www.churchillpc.org.uk](http://www.churchillpc.org.uk) to find out about Churchill and Langford villages, access help, community transport + details of activities and events.

